



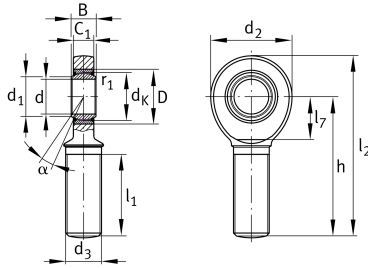
GAL17-UK-2RS-A

Rod end

Schaeffler ID:
0066468080000

Rod end with external thread, left hand thread, maintenance-free, sliding layer: ELGOGLIDE, DIN ISO 12240-4, dimension series E, type M, inner ring curved surface with hard chromium coating, sealed

Technical information



Main Dimensions & Performance Data

d	17 mm	Bore diameter bearing
d ₂	46 mm	Outer eye diameter
D	30 mm	Outside diameter bearing
l ₂	92 mm	Total length external thread rod
B	14 mm	Width inner ring
C _r	48,800 N	Basic dynamic load rating, radial
C _{0r}	56,500 N	Basic static load rating, radial
	200 g	Weight

Dimensions

d _k	25 mm	Ball diameter
d ₁	20.7 mm	Outer flange diameter inner ring
d ₃	M16	Thread size
h	69 mm	Shank Length External thread rod
C ₁	11 mm	Width of the rod end
α	10 °	Tilt angle
l ₁	36 mm	Thread length external thread
l ₇	23 mm	Distance drilling with/shaft start
G _r	0 - 0,04 mm	Radial Clearance
d _{OT}	0 mm	Bore diameter bearing, upper tolerance
d _{UT}	-0.008 mm	Bore diameter bearing, lower tolerance
B _{OT}	0 mm	Width inner ring, upper tolerance
B _{UT}	-0.12 mm	Width inner ring, lower tolerance

Mounting dimensions

r _{1smin}	0.3 mm	Edge Spacing
--------------------	--------	--------------

Temperature range

T _{min}	-30 °C	Operating temperature min.
T _{max}	130 °C	Operating temperature max.